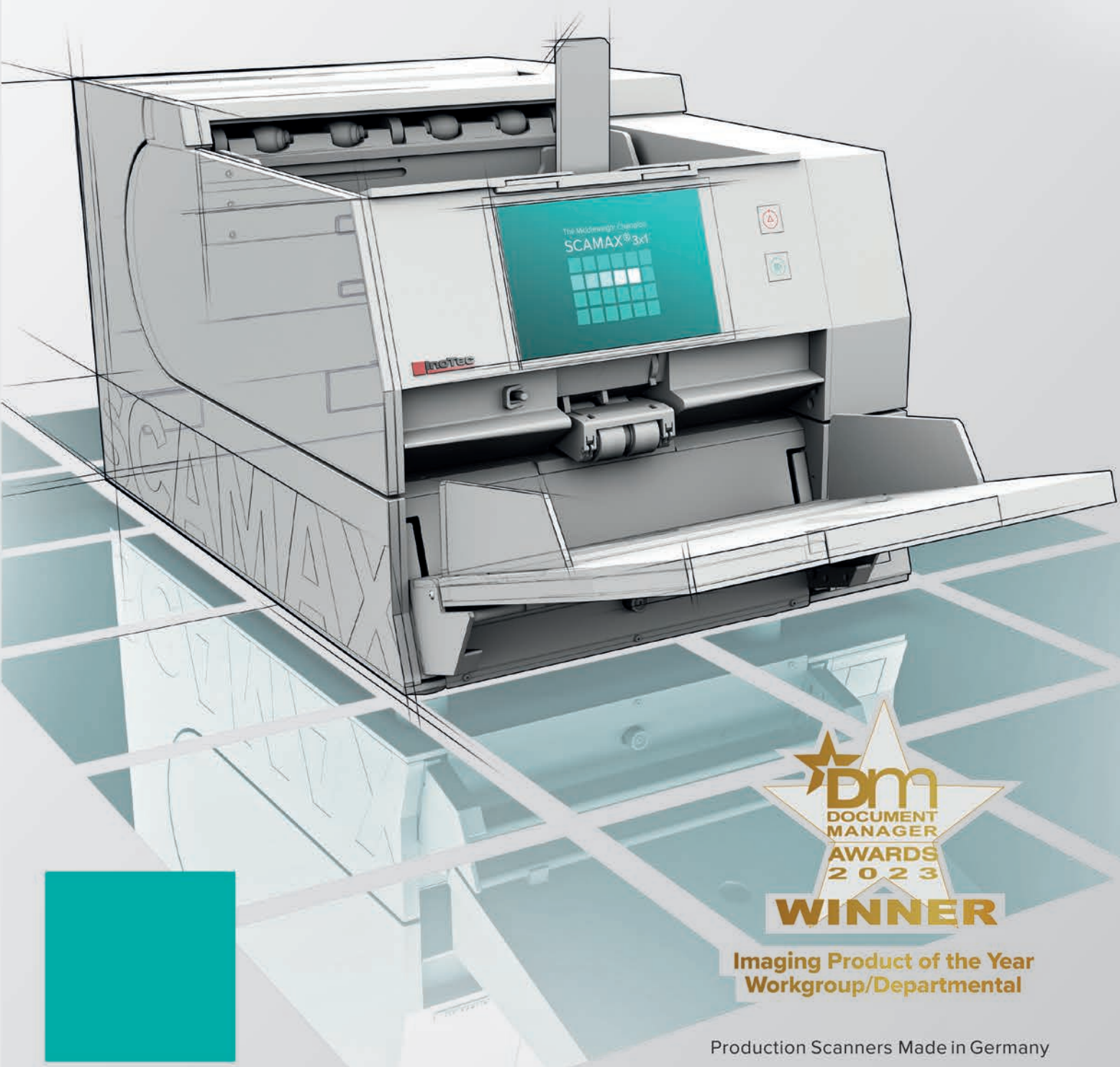




SCAMAX® 3x1

■ ■ ■ The Middleweight Champion



Imaging Product of the Year
Workgroup/Departmental

Production Scanners Made in Germany

Genuine production scanning for the mid-volume segment

Our smallest scanner not only dominates its class, it completely redefines it.

No more compromises! The SCAMAX® 3x1 brings true production scanning to the mid-volume segment and sets completely new standards. As the “little sibling” of the throughput sensation SCAMAX® 6x1, it combines the 24/7 operation capability and numerous premium functionalities of the world’s leading desktop production scanner into an even more compact device with favorable conditions. This allows your institution to handle even comparatively small daily volumes with the quality and reliability of a high-end production scanner, without using a sledgehammer to crack a nut. Optimized in terms of price and performance for daily throughputs ranging from three-digit to five-digit figures, the SCAMAX® 3x1 is the highest quality and most cost-effective choice whenever excellent results, intuitive usability and long product life are the key selection criteria.

Call it the “middleweight champ”, the new standard in the mid-volume class or a class of its own... We call it an InoTec production scanner. Made in Germany.

Arrange for a trial period today. We’re looking forward to your call.

Performance Upgrade

More work on the desk?
More power in the scanner!

SCAMAX® 321 | 120 sheets/min.

SCAMAX® 311 | 100 sheets/min.

All the scanners of the SCAMAX® Series can be upgraded at any time on site at your premises. Thus you simply respond to increasing scanning volumes or sorting requirements with increasing performance – while enjoying the greatest possible investment security. Another smart idea from InoTec for even more economic and ecological sustainability.

Scanner Performance

Specification for Bitonal/Color 200/300 dpi	SCAMAX® 311	SCAMAX® 321
SIMPLEX A4 landscape	100 sheets/min. 100 pages/min.	120 sheets/min. 120 pages/min.
DUPLEX A4 landscape	100 sheets/min. 200 pages/min.	120 sheets/min. 240 pages/min.

The scanning speed is dependent on various factors such as paper size and texture, PC configuration and the scan application

High throughput... is not everything.

High throughput may be the most striking feature of a production scanner. In the mid-volume segment, however, it is other features and success factors that allow users to scan with ease and productivity: the highest scan quality; availability and user-friendliness; and smart features and functionalities rule user needs in this space. In other words, state-of-the-art digitization does not always require the highest throughputs but always genuine production scanners.

CONTACT US

(024) 7625 4955
www.genusit.com
info@genusit.com
Hammond Close, Nuneaton,
Warwickshire, CV11 6RY,
United Kingdom

InoTec Organisationssysteme

At InoTec we optimize the business processes of our customers around the world with our highly trustworthy production scanners and excellent service. We have been doing this for more than 30 years. And we are still as keen on it as on the first day. Technical precision, long service life and sustainability as well as product and service quality Made in Germany are our commitment to our customers. And the demand we place on ourselves. We allow ourselves to be measured by this. With every single system.



Perfect Document TECHNOLOGY

Perfect Document Technology

for complete image processing on board: among other things, gamma correction, bicubic deskew, cropping and dynamic binarization for perfect bitonal images. In addition, Perfect Document Technology offers functions like multistreaming (simultaneous output of color, grayscale and bitonal images), automatic blank page detection, content based rotation, automatic color detection, patch-code controlled color changeover and much more.



Top Features

- Document sorting at full scan speed**
by event control: e.g. by patch-code, counter, document length, barcodes (1D & 2D) etc. Up to five sorting pockets (optional) in combination with SCAMAX® Sorter.
- Belt transport system, gentle to paper**
for safe transportation even of difficult documents: wear-free, maintenance-free, cleaning-free.
- FADGI*** & ISO 19264-1, Level B**
Proven scan quality according to the digitization guidelines for archiving of technical documentations, cultural heritage materials and many other documents.
- Readily accessible transport path**
for easy cleaning and fast removal of jammed documents.
- Speed selection**
for touch-screen controlled adjustment of the scan speed, even during the processing of the scan project (for the model 321). A specific scan speed can be assigned by the scanner settings to every scan project.
- NoSCRATCH glass guide**
for guaranteed scratch resistance to paper clips and staples (with a three-year NoSCRATCH warranty on glass guides).
- Traffic light logic**
for fast, intuitive handling.
- Variable input pressure**
for optimized document input depending on document quality and size.
- SlowDown Modus (optional)**
for scanning with reduced scan speed for critical document types.
- Transport width and scan width up to 317.5 mm**
for processing tabs and separating pages.
- Large 7" MultiTouch Communication Panel**
for maximum user friendliness and intuitive operation. With easily understandable pictograms, traffic light logic and clear full text messages.
- Straight paper throughput**
by means of rear document output with active switch (admission height 2 mm).



Product videos

Scan the QR code to experience the product features in live operation.

Scanner Specifications

SCAMAX® 3111 321

General Technical Specification

Scanning Method	CCD line camera
Illumination	LED Illumination (diffuse)
Optical Resolution	600 dpi
Output Resolutions	75, 100, 150, 200, 240, 300, 400, 600 dpi dual or multi resolution possible
Output Compressions	CCITT Group IV, JPEG, PDF/R (Raster), TIFF or uncompressed
Color Image	24 Bit, 16.8 million colors (True Color)
Gray Image	8 Bit, 256 gray levels
Bitonal Image	1 Bit color depth, bitonal
Daily Volume	Unlimited
Throughput ⁽⁴⁾ (by A4 landscape, 200 and 300 dpi, bitonal and color)	100 sheets/min (model 311), 120 sheets/min (model 321)
Warranty	12 month
NoSCRATCH-Warranty	36 month on glass guide
Digitization Guidelines	FADGI: ***, ISO 19264-1: Level B

Image Processing / PDT (Perfect Document Technology)

Image Orientation	Bicubic skewness correction with black border removal and text-oriented alignment
Gamma Correction	3-level correction (color, black, white)
Color Dropout	Up to three color areas definable
Binarization Method	Dynamic with pixel filters and result preview
Stream Control	Based on Automatic Color Detection and/or Event Control (e.g. Patch Code, 1D & 2D Barcode)
Blank Page Detection	Content-based dynamic procedure with two definable impact areas
ICC profiles	embedding of ICC profiles or conversion to different target color spaces (e.g. sRGB, Adobe RGB1998, eciRGB)

Paper Processing / Handling

Paper Input	Automatically for batch or single sheet input, adjustable paper guide (also asymmetric), integrated support for long documents
Max. Stack Height	50 mm (approx. 500 sheets)
Document Width	56 mm to 317,5 mm
Document Length	60 mm to 1950 mm ^{(1) and (4)} Automatic LongDoc mode: extension of the maximum scan length to approx. 15.5 m by internal splitting of the image processing, depending on the selected resolution and chosen paper format
Paper Formats	<ul style="list-style-type: none"> • ISO formats: A3, A4, A5, A6, A7, B4, B5, B6, B7 • US formats: Ledger, Legal, Letter, Executive, Invoice • User defined format
Maximum Admission Height ⁽²⁾	2 mm (by straight Paper Path)

Paper Weight ⁽³⁾	30 g/m ² to 300 g/m ²
Input Control	Mechanical paper separation, Double Feed Detection via five, separately definable, ultrasonic sensors and automatic staple/metal recognition
Flow Control	Paper Flow Control (PFC) with optional length control
Scan Areas	Dust-protected with NoSCRATCH Glass Guide, variable height (three levels)
Document Output Front	Adjustable paper stop and asymmetrically adjustable paper guides. Removal aid. Optional instead of front document output tray; event-controlled sorting unit with two or four output trays
Document Output Rear	Rear output by straight paper path, controlled by active switch, to sort out separator sheets at full speed or to handle inflexible documents
Indexing	Sequential ID and four definable, event controlled counters for document indexing, integrated patch code and barcode reader 1D & 2D (e.g. 2/5 Interleaved, Code 39, Code 128, QR Code, Datamatrix)
Imprinter SD ⁽⁵⁾	Inkjet imprinter (resolution 96 dpi) with ink management for definable single line printing, prior to scanning on document front side and after scanning on rear side
Imprinter HD ⁽⁵⁾	HD imprinter (resolution 300, 600, 1200 dpi) with ink management for up to four lines printing after scanning on document rear side. Printing height up to 14.2 mm and barcode printing
Imprinter Digital	Digital image print. Content linkable to physical printed information and freely definable
SlowDown Modus ⁽⁶⁾	Reduction of scan speed for safe document handling (20, 40, 70 ppm)

Interfaces

Operation	Via capacitive 7" MultiTouch Communication Panel (MTCP) with integrated user management
Supported OS	Windows 7/8 (32/64 Bit), Windows 10/11 (64 Bit)
Driver	TWAIN™, ISIS® (MS61 ISIS compatible), WIA (on demand)
Scan PC	USB 3.0 (socket type B)
Interface	3 x USB 2.1 (socket type A) for input devices/storage media. Socket DE-9 for service and up to 4 additional input switches
Certifications	Kofax VRS / Express

Technical Data

Power Consumption	Max. 200 Watt ⁽⁴⁾ , Standby Mode < 0,5 Watt
Electrical Connection	100 - 240 Volt; 50/60 Hertz; max. 2 Ampere
Environmental Conditions	Temperature: 10 - 35 °C / 50 - 95 °F Relative humidity: 30 - 80%
Dimensions	Width: 468 mm, Depth: 910 mm, Height: 380 mm
Weight	50,0 kg (without options)
Noise Emission	Operation ready: max. 48 dB (A) Operation ⁽⁴⁾ : 55 dB (A)

⁽¹⁾ Restrictions in relation to image processing settings and resolution are possible

⁽²⁾ Maximum admission height is not equal to the maximum paper thickness. Dependent on the material

⁽³⁾ Maximum paper weight can vary and ultimately depend on surface condition and the flexibility of material

⁽⁴⁾ Depending on model

⁽⁵⁾ Optional

Technical changes reserved.

(024) 7625 4955

www.genusit.com

info@genusit.com

Hammond Close, Nuneaton,
Warwickshire, CV11 6RY,
United Kingdom



Test it now
for free for
30 days!

SCAMAX® scan+

■ ■ ■ The Performance Booster

High performance becomes maximum performance: this intuitively operated premium scan client fully utilizes the potential of your SCAMAX® production scanner.

InoTec production scanners rank among the most powerful on the ECM market. With SCAMAX®scan+ they reach their peak performance. This cost-effective premium scan client in familiar MS Office look-and-feel makes the entire scope of scanner functions available even at top scanning speed and it can be easily integrated in existing document and content management systems. For the most efficient and highest-quality scanning projects of all sizes.

SCAMAX®scan+ is the premium version of the SCAMAX®scan basic scan client included in the purchase price of every SCAMAX® scanner. Subject to a licensing fee, SCAMAX®scan+ includes numerous expanded functions and image processing options.

Function	SCAMAX® scan	SCAMAX® scan+
Single scan / batch scan	■	■
Dual stream / Multi stream	■	■
Second TWAIN source	■	■
Max. pages displayed	2	8
Thumbnail view / tree view	■	■
Freely definable shortcuts	■	■
Freely configurable project templates	up to 2	∞
Use of scan counters	■	■
Blank page detection via scanner info or post scan	■	■
Deletion marker for detected blank pages or manual	■	■
1D / 2D barcode recognition via 3 integrated engines **	■	■
Character recognition OCR (Open Source)	■	■
Document separation via scanner (barcode / patch / counter)	■	■
Document separation, internal (barcode / OCR / manual / etc.)	■	■
Indexing via scanner information, barcode, OCR and manual	■	■
Manual image processing (post scan)	■	■
Output format: TIFF, multipage TIFF, JPEG	■	■
Output format: PDF/A and others *	■	■
Output files: index, signal, TXT, XML, etc.	■	■
Customizing possible via PowerShell script	■	■
Export process manager in the background (tasks of its own)	■	■
Output to conventional DMS / ECM systems	■	■
Statistic module	■	■
Multilanguage	■	■
Docking windows	■	■
Easy import / export of project templates	■	■
Free updates ^①	■	■
Digital license or hardware dongle (optional)	■	■

SYSTEM REQUIREMENTS

Intel Core i7, 8 GB working memory, Graphic card 1 GB memory, 2 GB free hard disk memory for the software environment, SSD hard disk as temporary scanning image memory

Operating systems supported:
Windows 7 / 8.x / 10 / 11

* = BMP, GIF, J2K, JP2, JPG, PDF/A, PNG, PNM, PSD, TGA, TIF, WMF

** = Codabar, Code 128, Code 32, Code 39, Code 93, Data Matrix, EAN 13, EAN 8, Interleaved 2/5, Patchcode, PDF417, Postnet, Plus 2, Plus 5, QR Code, UPC A, UPC E

^① within a major version

Version v03 - Stand 12/03/2024

(024) 7625 4955

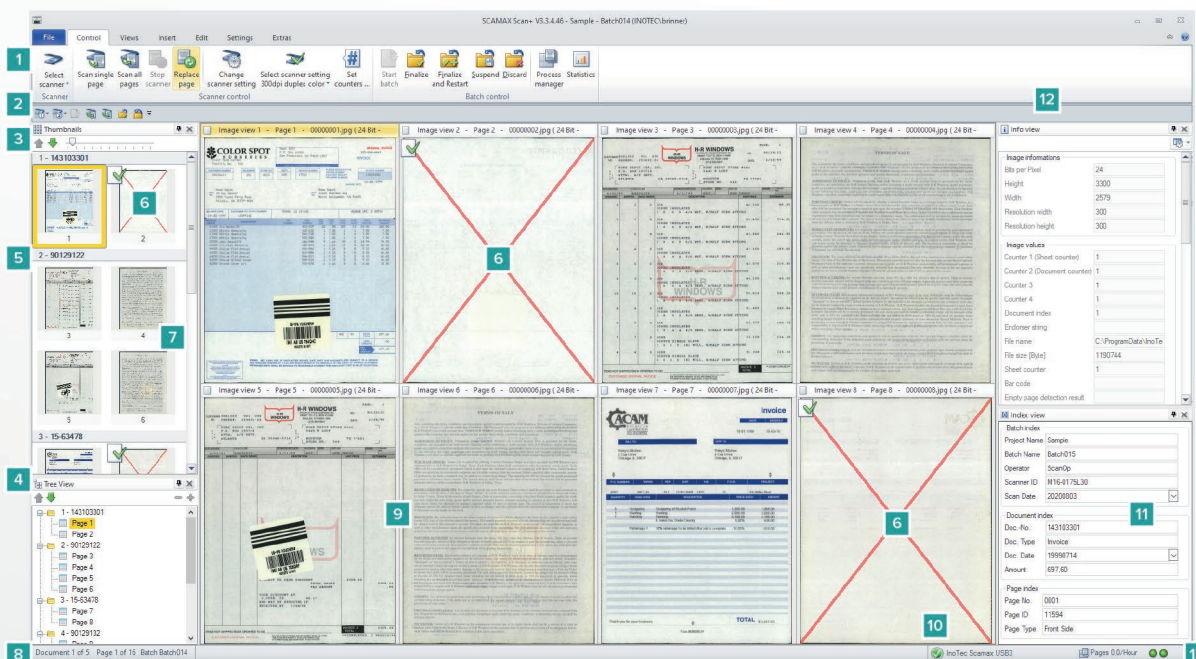
www.genusit.com

info@genusit.com

Hammond Close, Nuneaton, Warwickshire, CV11 6RY,
United Kingdom

Clearly arranged for intuitive operation

The multilingual program surface in office design offers easily understandable symbols and a freely definable quick function toolbar.



- 1 Function toolbar with easily understandable symbols
- 2 Freely definable quick function toolbar
- 3 Thumbnail view
- 4 Tree view
- 5 Document separation
- 6 Blank page detection with deletion marker

- 7 Page counter
- 8 Document and page counter display
- 9 View of the scanned images

- 10 Scanner status
- 11 Index window
- 12 Info window
- 13 Display of the scanning performance



Would you like to test SCAMAX® scan+ free of charge?

Just scan the QR code and try out the full version free and without obligation for 30 days.

High performance scan client for digitizing and capturing documents

Superb price/performance ratio – free updates

Ideal for SME, scanning service providers, banks, insurance companies and public authorities